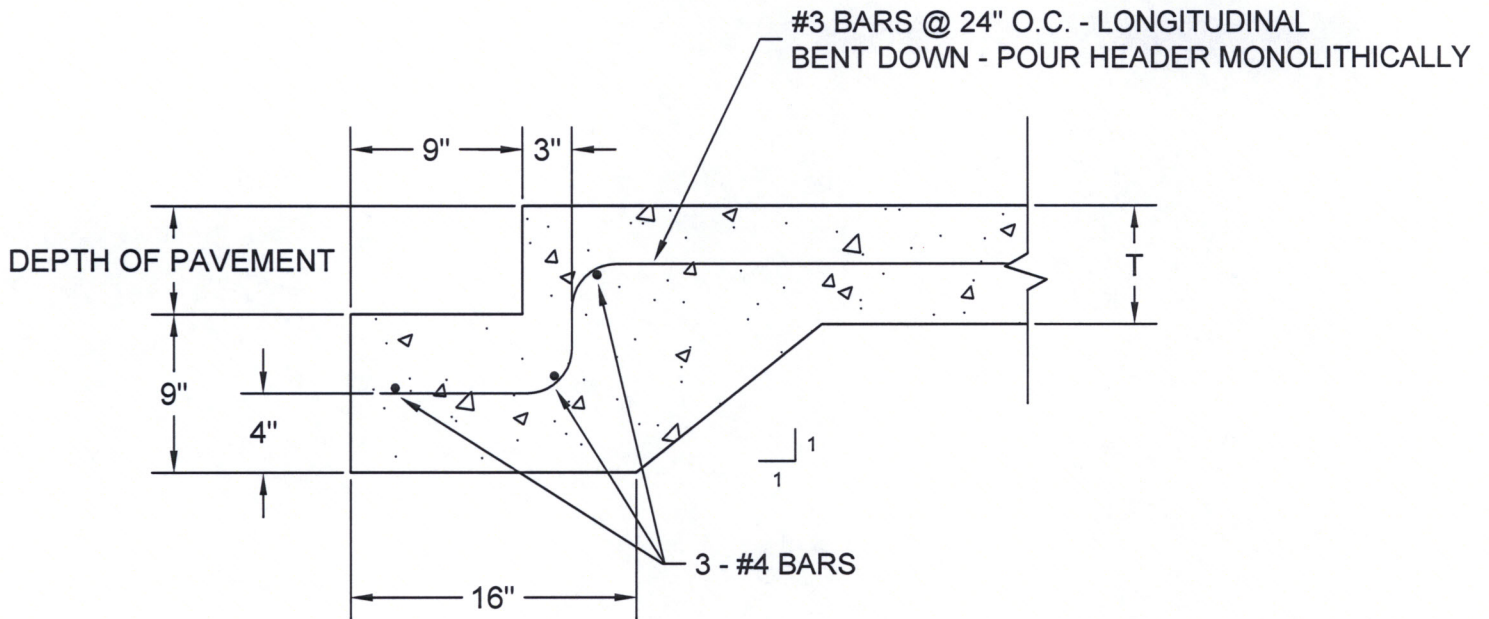


CONCRETE HEADER DETAIL



CONCRETE SHALL HAVE A TWENTY-EIGHT (28) DAY COMPRESSIVE STRENGTH OF 3500 PSI.

CONCRETE HEADER DETAIL



CITY OF GREENVILLE
PUBLIC WORKS DEPARTMENT

DRAWN: K. Colbert

SCALE: NTS

DATE DRAWN:
8-21-07

DATE REVISED:
8-21-07

DRAWING NO.
25017